

EXHIBIT A

NW 1/4, SECTION 11, TOWNSHIP 3 SOUTH, RANGE 66 WEST 6th P.M.
-----CITY OF AURORA, COUNTY OF ADAMS, STATE OF COLORADO-----

PROPERTY DESCRIPTION

TWO PARCELS OF LAND BEING A PORTION OF THE NORTHWEST QUARTER OF SECTION 11, TOWNSHIP 3 SOUTH, RANGE 66 WEST OF THE 6TH PRINCIPAL MERIDIAN, CITY OF AURORA, COUNTY OF ADAMS, STATE OF COLORADO AND BEING MORE PARTICULARLY DESCRIBED AS FOLLOWS:

BEARINGS ARE ASSUMED AND ARE BASED ON THE NORTH LINE OF THE NORTHWEST QUARTER OF SECTION 11, TOWNSHIP 3 SOUTH, RANGE 66 WEST OF THE 6TH PRINCIPAL MERIDIAN AS BEARING S89°55'04"W BETWEEN THE NORTH QUARTER CORNER OF SAID SECTION 11 AND THE NORTHWEST CORNER OF SAID SECTION 11. BASED ON THE CITY OF AURORA HORIZONTAL CONTROL NETWORK, COLORADO STATE PLANE CENTRAL ZONE 1983/1992 HARN. THIS DESCRIPTION UTILIZED RECORDED DOCUMENTS FROM THE ADAMS COUNTY CLERK AND RECORDER'S OFFICE AND DOES NOT REPRESENT A MONUMENTED LAND SURVEY AND SHOULD NOT BE RELIED UPON AS SUCH.

PARCEL 1

COMMENCING AT SAID NORTH QUARTER CORNER OF SECTION 11;

THENCE S77°54'59"W A DISTANCE OF 259.69 FEET TO THE **POINT OF BEGINNING**;

THENCE S00°29'13"E A DISTANCE OF 329.04 FEET;

THENCE S89°55'13"W A DISTANCE OF 535.51 FEET;

THENCE S00°29'13"E A DISTANCE OF 310.01 FEET;

THENCE S89°55'13"W A DISTANCE OF 420.52 FEET;

THENCE S00°29'13"E A DISTANCE OF 274.01 FEET;

THENCE S89°55'13"W A DISTANCE OF 7.50 FEET;

THENCE S00°29'13"E A DISTANCE OF 178.00 FEET;

THENCE S89°55'13"W A DISTANCE OF 222.01 FEET;

THENCE N00°29'13"W A DISTANCE OF 79.86 FEET;

THENCE S89°30'47"W A DISTANCE OF 139.64 FEET;

THENCE N00°29'13"W A DISTANCE OF 135.14 FEET;

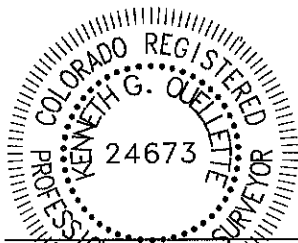
THENCE N89°55'13"E A DISTANCE OF 132.16 FEET;

THENCE N00°29'13"W A DISTANCE OF 238.01 FEET;

THENCE S89°55'13"W A DISTANCE OF 601.25 FEET;

THENCE N10°32'04"W TANGENT WITH THE FOLLOWING DESCRIBED CURVE A DISTANCE OF 58.28 FEET;

THENCE ALONG THE ARC OF A CURVE TO THE RIGHT, HAVING A CENTRAL ANGLE OF 32°30'57", A RADIUS OF 529.00 FEET, A CHORD BEARING N05°43'24"E A DISTANCE OF 296.20 FEET, AND AN ARC DISTANCE OF 300.21 FEET;

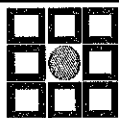


KENNETH G. QUELITE, P.L.S. 24673

DATE: SEPTEMBER 6, 2023

JOB NO. 65419757

FOR AND ON BEHALF OF MERRICK & COMPANY



MERRICK®

5970 Greenwood Plaza Blvd., Greenwood Village, CO 80111
Telephone: 303-751-0741

PAINTED PRAIRIE METROPOLITAN
DISTRICT NO. 7

DATE: 9/6/23

SHEET: 1 OF 4

EXHIBIT A

NW 1/4, SECTION 11, TOWNSHIP 3 SOUTH, RANGE 66 WEST 6th P.M.
-----CITY OF AURORA, COUNTY OF ADAMS, STATE OF COLORADO-----

PROPERTY DESCRIPTION

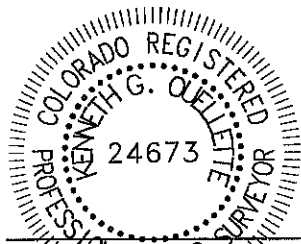
THENCE N21°58'53"E TANGENT WITH THE FOLLOWING DESCRIBED CURVE A DISTANCE OF 71.41 FEET;
THENCE ALONG THE ARC OF A CURVE TO THE LEFT, HAVING A CENTRAL ANGLE OF 22°28'05", A
RADIUS OF 271.00 FEET, A CHORD BEARING N10°44'50"E A DISTANCE OF 105.59 FEET, AND AN ARC
DISTANCE OF 106.27 FEET;
THENCE N00°27'54"W NON-TANGENT WITH THE FOLLOWING DESCRIBED CURVE A DISTANCE OF 92.09
FEET;
THENCE ALONG THE ARC OF A CURVE TO THE LEFT, HAVING A CENTRAL ANGLE OF 93°20'25", A
RADIUS OF 25.00 FEET, A CHORD BEARING N47°08'07"W A DISTANCE OF 36.37 FEET, AND AN ARC
DISTANCE OF 40.73 FEET;
THENCE N89°55'04"E A DISTANCE OF 1747.97 FEET TO THE **POINT OF BEGINNING**.

CONTAINING 25.008 ACRES, MORE OR LESS.

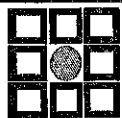
PARCEL 2

COMMENCING AT SAID NORTH QUARTER CORNER OF SECTION 11;
THENCE S36°15'16"W A DISTANCE OF 1155.75 FEET TO THE **POINT OF BEGINNING**;
THENCE S00°04'47"E A DISTANCE OF 135.00 FEET;
THENCE S89°55'13"W A DISTANCE OF 43.56 FEET;
THENCE S00°29'13"E A DISTANCE OF 1.50 FEET;
THENCE S89°30'47"W A DISTANCE OF 58.00 FEET;
THENCE N00°29'13"W A DISTANCE OF 136.92 FEET;
THENCE N89°55'13"E A DISTANCE OF 102.53 FEET TO THE **POINT OF BEGINNING**.

CONTAINING 0.319 ACRES, MORE OR LESS.



KENNETH G. QUELLET, P.L.S. 24673
DATE: SEPTEMBER 6, 2023
JOB NO. 65419757
FOR AND ON BEHALF OF MERRICK & COMPANY



MERRICK®

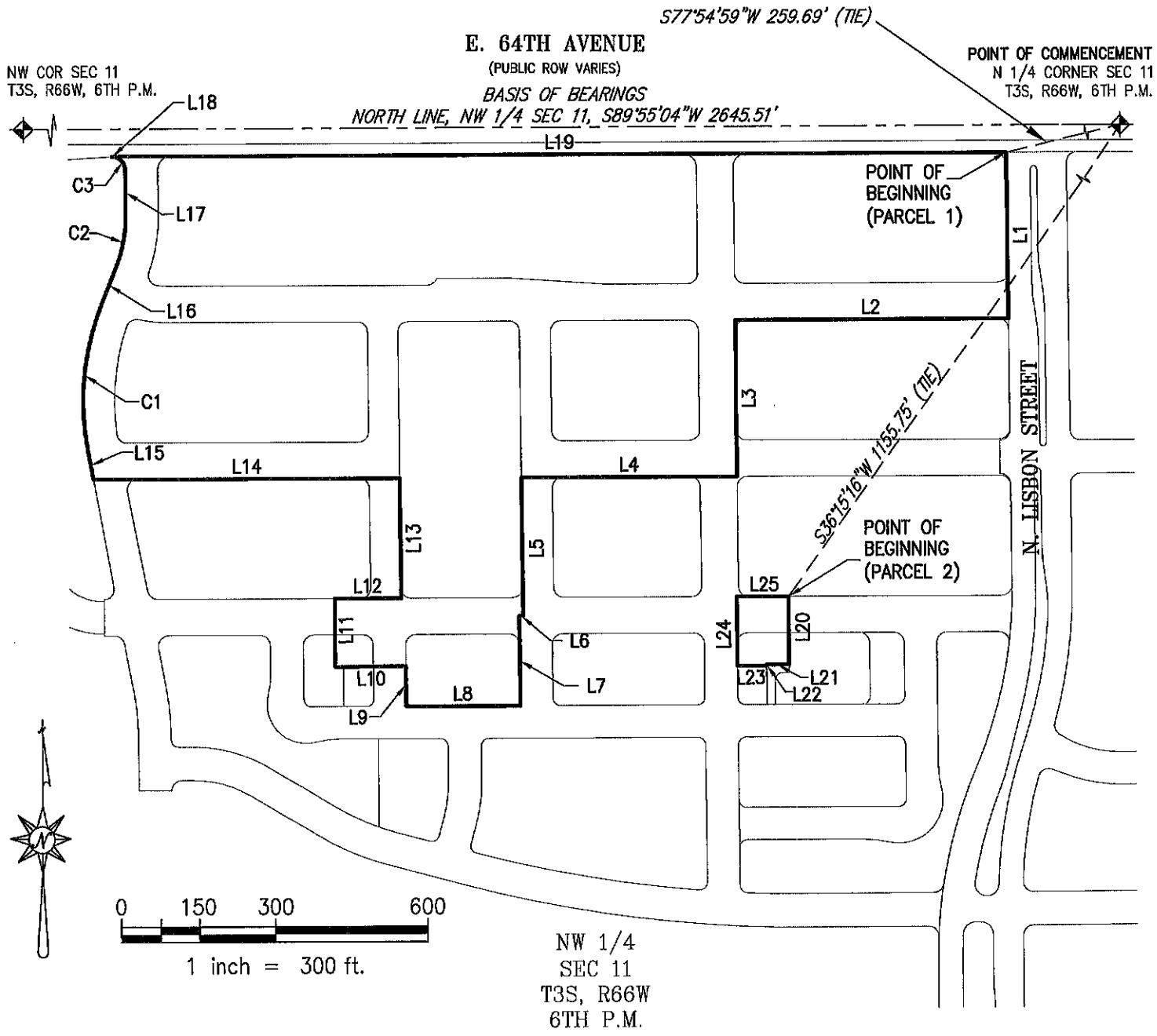
5970 Greenwood Plaza Blvd., Greenwood Village, CO 80111
Telephone: 303-751-0741

PAINTED PRAIRIE METROPOLITAN
DISTRICT NO. 7

DATE: 9/6/23

SHEET: 2 OF 4

ILLUSTRATION FOR EXHIBIT A



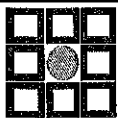
THE ABOVE DESCRIBED PARCEL 1 CONTAINS 25.008 ACRES MORE OR LESS.
 THE ABOVE DESCRIBED PARCEL 2 CONTAINS 0.319 ACRES MORE OR LESS.
 This illustration does not represent a monumented survey. It is intended only to depict the attached legal description.

 <p>MERRICK 5970 Greenwood Plaza Blvd., Greenwood Village, CO 80111 Telephone: 303-751-0741</p>	<p>PAINTED PRAIRIE METROPOLITAN DISTRICT NO. 7</p>	<p>DATE: 9/6/23</p>
	<p>SHEET: 3 OF 4</p>	

ILLUSTRATION FOR EXHIBIT A

LINE TABLE		
LINE #	BEARING	LENGTH
L1	S00°29'13"E	329.04'
L2	S89°55'13"W	535.51'
L3	S00°29'13"E	310.01'
L4	S89°55'13"W	420.52'
L5	S00°29'13"E	274.01'
L6	S89°55'13"W	7.50'
L7	S00°29'13"E	178.00'
L8	S89°55'13"W	222.01'
L9	N00°29'13"W	79.86'
L10	S89°30'47"W	139.64'
L11	N00°29'13"W	135.14'
L12	N89°55'13"E	132.16'
L13	N00°29'13"W	238.01'
L14	S89°55'13"W	601.25'
L15	N10°32'04"W	58.28'
L16	N21°58'53"E	71.41'
L17	N00°27'54"W	92.09'
L18	N86°11'41"E	2.99'
L19	N89°55'04"E	1747.97'
L20	S00°04'47"E	135.00'
L21	S89°55'13"W	43.56'
L22	S00°29'13"E	1.50'
L23	S89°30'47"W	58.00'
L24	N00°29'13"W	136.92'
L25	N89°55'13"E	102.53'

CURVE TABLE					
CURVE #	DELTA	RADIUS	CHORD BEARING	CHORD LENGTH	LENGTH
C1	32°30'57"	529.00'	N05°43'24"E	296.20'	300.21'
C2	22°28'05"	271.00'	N10°44'50"E	105.59'	106.27'
C3	93°20'25"	25.00'	N47°08'07"W	36.37'	40.73'



MERRICK®

5970 Greenwood Plaza Blvd., Greenwood Village, CO 80111
Telephone: 303-751-0741

PAINTED PRAIRIE METROPOLITAN
DISTRICT NO. 7

DATE: 9/6/23

SHEET: 4 OF 4